

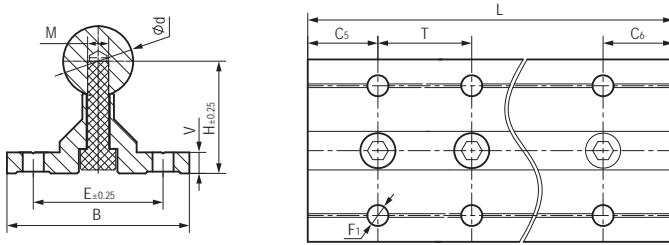
标准支撑轴 Standard supported shafts



产品特性 Product features

- 标准设计支撑轴
- 可用轴材料：AS精密铝轴，CS精密硬铬钢轴，ES精密304不锈钢轴
- 轴和支撑件组装
- 最大许可长度2500mm
- Standard support shafts
- Available shaft materials: Aluminum, hard anodized C45, hard-chromed Stainless steel (304), hardened
- Shafts and supports are supplied assembled
- The max. length of supports: 2500 mm

标准规格 Standard specifications



产品编码 Part No.:

ASS02-12-0000

长度 Length

直径 Diameter

支撑类型 Type: S02

装配轴 Shaft: AS CS ES

产品编码 Part No.	装配轴 Shaft	d [mm]	F ₁ [mm]	H [mm]	V [mm]	B [mm]	E [mm]	M [mm]	C ₅ =C ₆ [mm]		T [mm]	L max. [mm]	重量 Weight [kg/m]
									min.	max.			
ASS02-12-0000	AS-12	12	4.5	22	5	40	29	M4	20	57	75	2500	1.07
ASS02-16-0000	AS-16	16	5.5	26	5	45	33	M5	20	69	100	2500	1.47
ASS02-20-0000	AS-20	20	6.6	32	6	52	37	M6	20	69	100	2500	2.16
ASS02-25-0000	AS-25	25	6.6	36	6	57	42	M6	20	79	120	2500	2.94
ASS02-30-0000	AS-30	30	9	42	7	69	51	M8	20	94	150	2500	3.56

产品编码 Part No.	装配轴 Shaft	d [mm]	F ₁ [mm]	H [mm]	V [mm]	B [mm]	E [mm]	M [mm]	C ₅ =C ₆ [mm]		T [mm]	L max. [mm]	重量 Weight [kg/m]
									min.	max.			
CSS02-12-0000	CS-12	12	4.5	22	5	40	29	M4	20	57	75	2500	1.64
CSS02-16-0000	CS-16	16	5.5	26	5	45	33	M5	20	69	100	2500	2.49
CSS02-20-0000	CS-20	20	6.6	32	6	52	37	M6	20	69	100	2500	3.75
CSS02-25-0000	CS-25	25	6.6	36	6	57	42	M6	20	79	120	2500	5.42
CSS02-30-0000	CS-30	30	9	42	7	69	51	M8	20	94	150	2500	7.63

产品编码 Part No.	装配轴 Shaft	d [mm]	F ₁ [mm]	H [mm]	V [mm]	B [mm]	E [mm]	M [mm]	C ₅ =C ₆ [mm]		T [mm]	L max. [mm]	重量 Weight [kg/m]
									min.	max.			
ESS02-12-0000	ES-12	12	4.5	22	5	40	29	M4	20	57	75	2500	1.64
ESS02-16-0000	ES-16	16	5.5	26	5	45	33	M5	20	69	100	2500	2.49
ESS02-20-0000	ES-20	20	6.6	32	6	52	37	M6	20	69	100	2500	3.75
ESS02-25-0000	ES-25	25	6.6	36	6	57	42	M6	20	79	120	2500	5.42
ESS02-30-0000	ES-30	30	9	42	7	69	51	M8	20	94	150	2500	7.63